

АРИМА модели за изследване замърсяването на въздуха - град Благоевград през периода 2008-2012

Атанас Иванов

Семинар по Изчислителна статистика, 16.10.2012

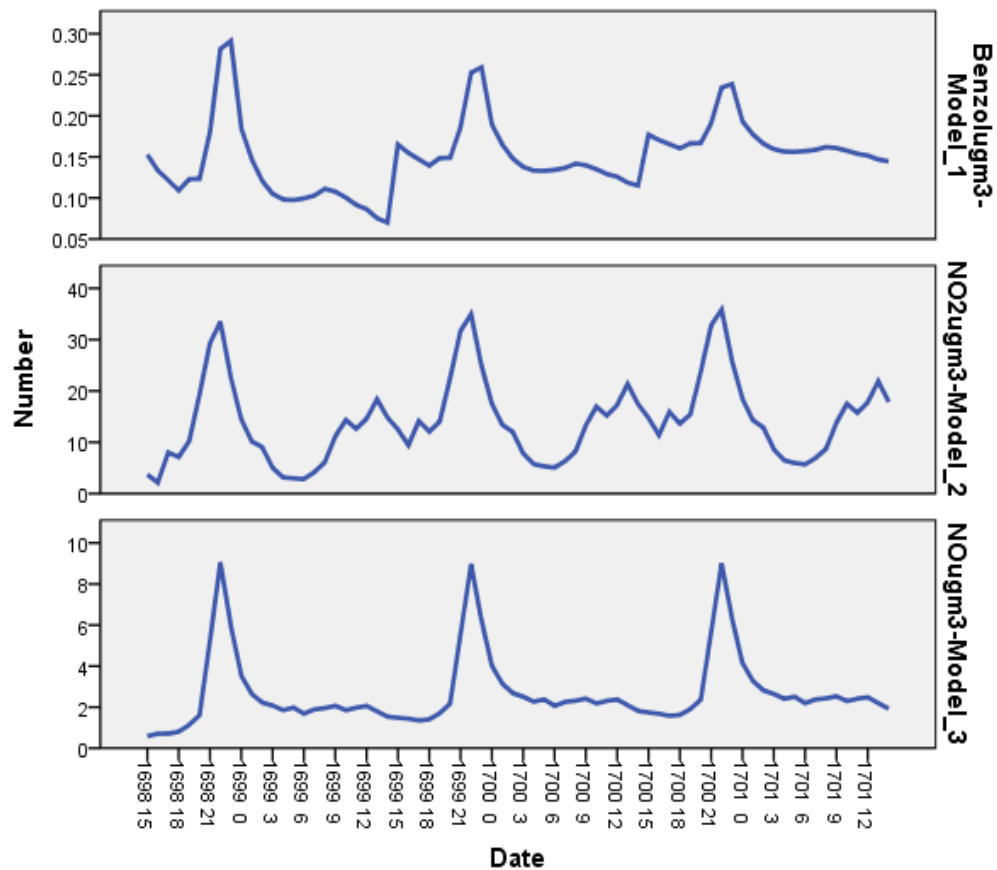
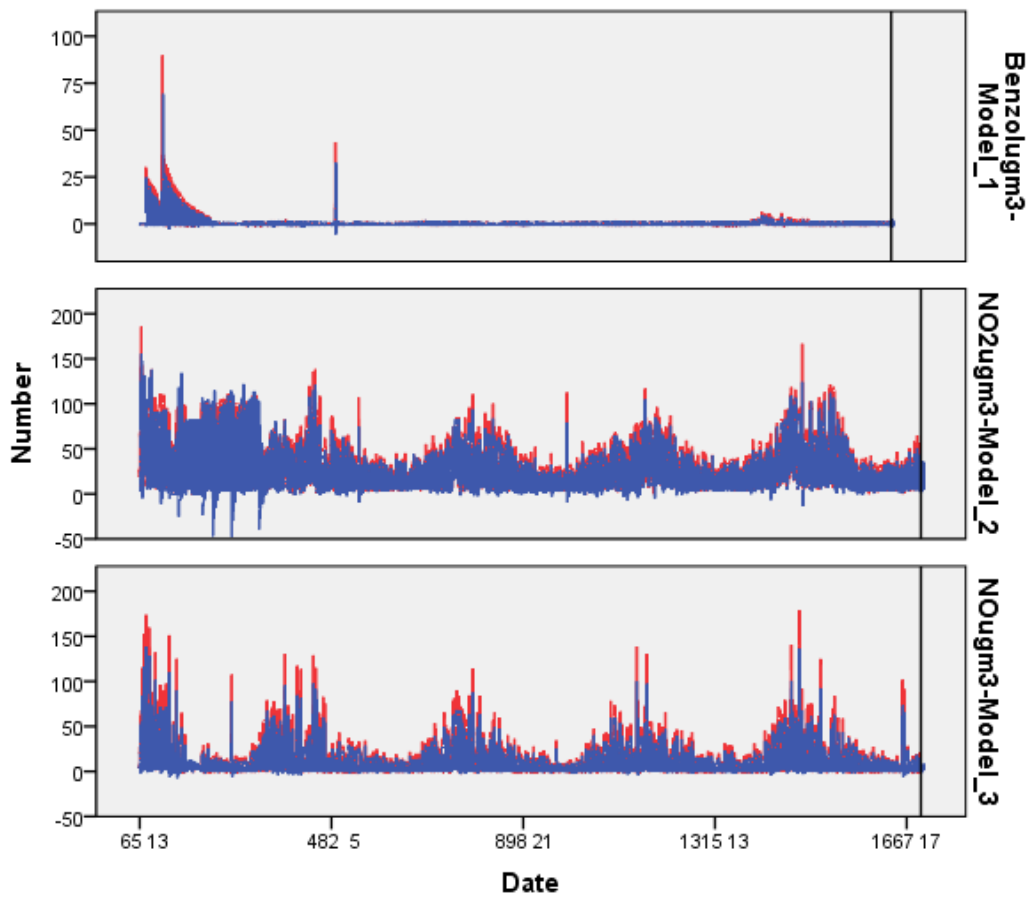
Таблица 1

Модел	Number of Predictor s	Model Fit statistics		Ljung-Box Q(18)			Number of Outliers
		Stationary R-squared	R-squared	Statistics	DF	Sig.	
Benzol (ug/m3)- ARIMA(1,0,9)(1,0,1)	0	.561	.561	27.180	11	.004	0
NO2 (ug/m3)- ARIMA(2,0,12)(1,1,1)	0	.713	.771	32.912	11	.001	0
NO (ug/m3)- ARIMA(3,0,4)(2,0,1)	0	.688	.688	63.644	9	.000	0
O3 (ug/m3)- ARIMA(1,1,9)(2,0,1)	0	.330	.920	79.481	11	.000	0
PM10 (ug/m3)- ARIMA(1,1,6)(2,0,1)	0	.157	.808	85.691	10	.000	0
SO2 (ug/m3)- ARIMA(2,0,4)(1,0,2)	0	.731	.731	26.865	9	.001	0
TOLUENE (ug/m3)- Simple Seasonal	0	.775	.359	1123.658	16	.000	0
NOx (ppb)- ARIMA(4,0,5)(1,0,2)	0	.775	.775	56.292	8	.000	0
p-xylene (ug/m3)- ARIMA(1,1,3)(1,0,0)	0	.228	.958	286.177	13	.000	0

Таблица 2

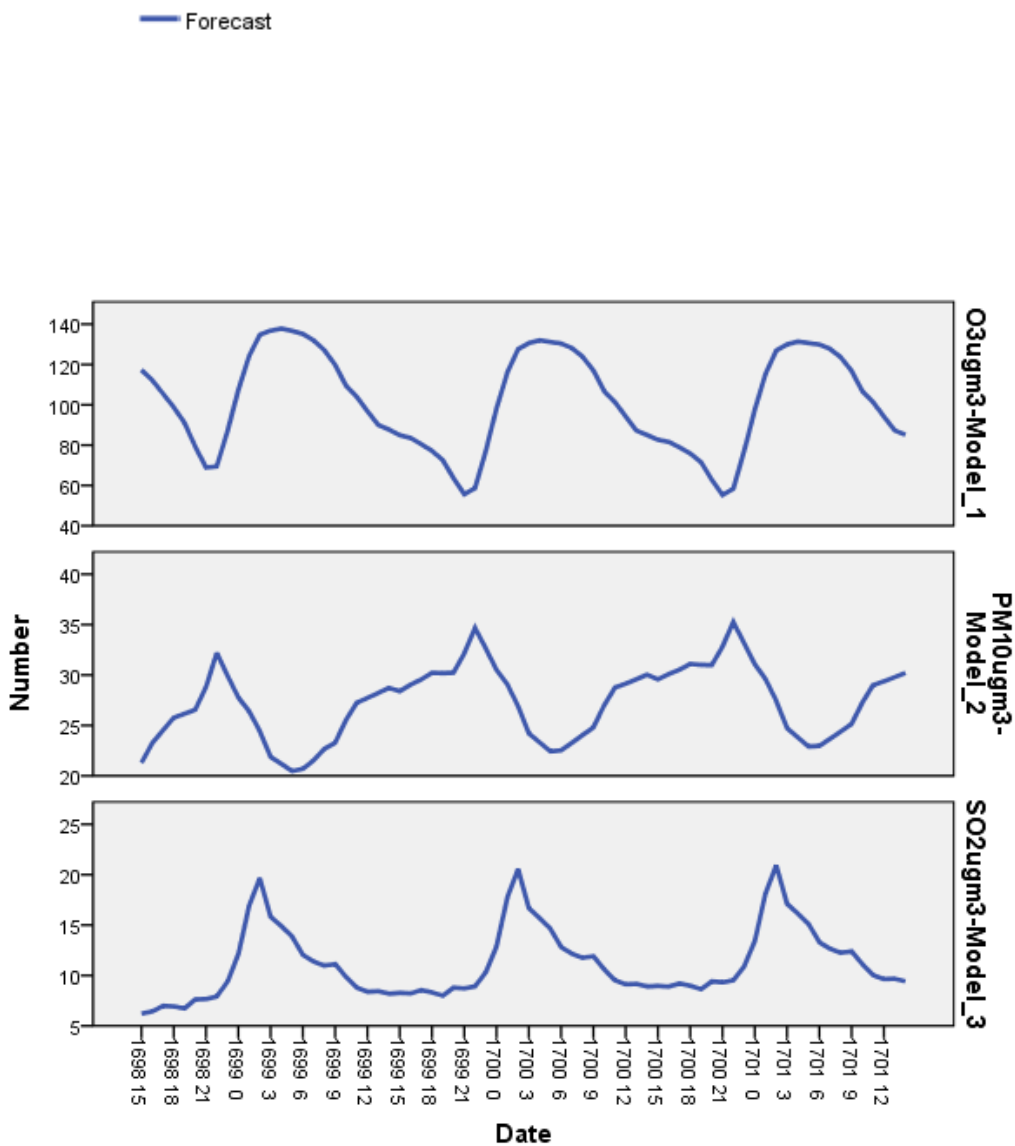
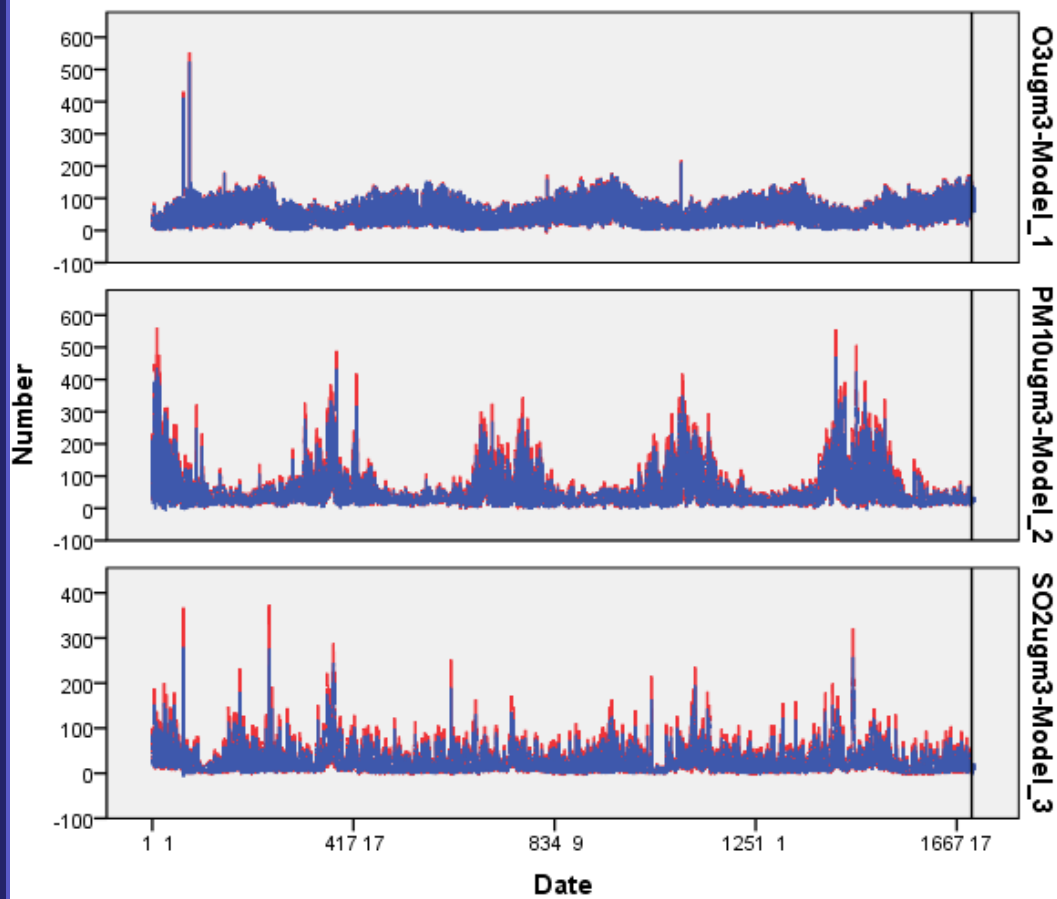
модел	Number of Predictors	Model Fit statistics		Ljung-Box Q(18)			Number of Outliers
		Stationary R-squared	R-squared	Statistics	DF	Sig.	
Benzol (ug/m3)- ARIMA(1,0,9)(1,0,1)	2	.562	.562	27.149	11	.004	0
NO2 (ug/m3)- ARIMA(2,0,10)(1,1,1)	3	.749	.799	22.850	11	.019	0
NO (ug/m3)- ARIMA(3,0,8)(2,0,1)	4	.696	.696	322.796	10	.000	0
O3 (ug/m3)- ARIMA(1,1,3)(2,0,1)	4	.503	.941	33.379	12	.001	0
PM10 (ug/m3)- ARIMA(1,1,12)(2,0,1)	4	.217	.822	65.680	9	.000	0
SO2 (ug/m3)- ARIMA(2,0,11)(1,0,2)	4	.736	.736	18.500	9	.030	0
TOLUENE (ug/m3)- ARIMA(0,1,12)(1,0,1)	2	-.112	-.004	7853.530	10	.000	0
NOx (ppb)- ARIMA(4,0,5)(1,0,2)	4	.795	.795	54.061	8	.000	0
p-xylene (ug/m3)- ARIMA(1,1,4)(1,0,0)	3	.200	.956	629.569	12	.000	0

ARIMA модели за изследване замърсяването на въздуха - град Благоевград през периода 2008-2012



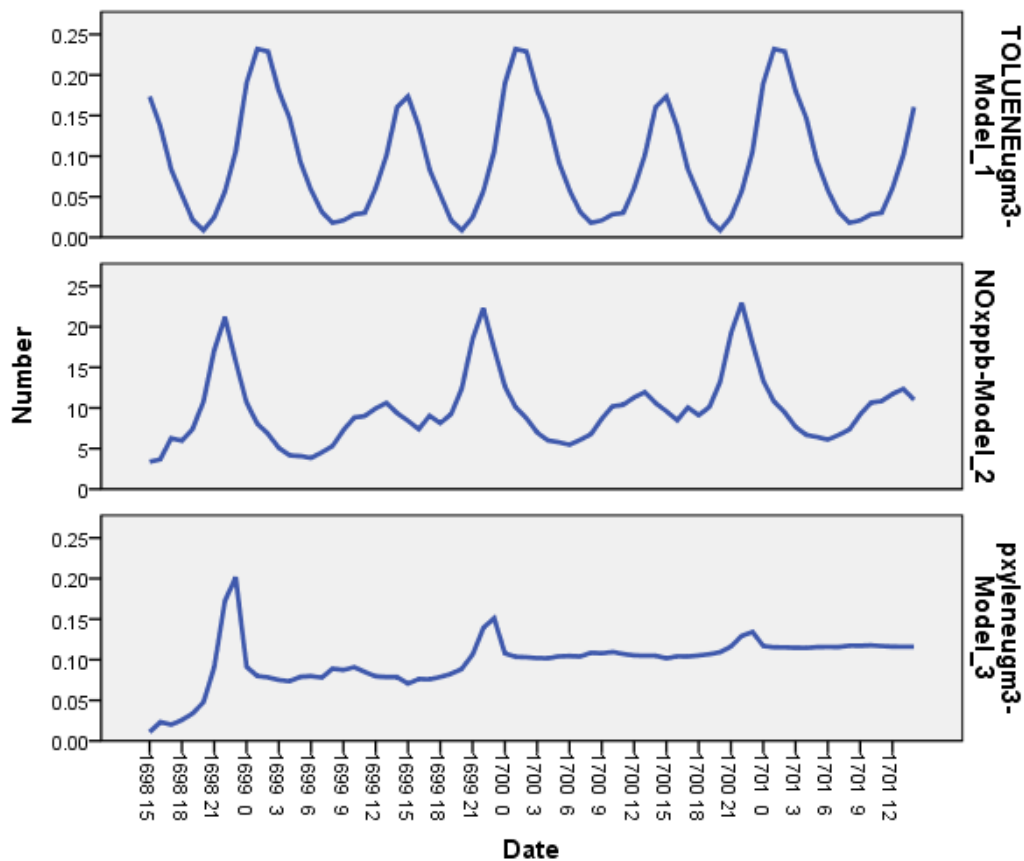
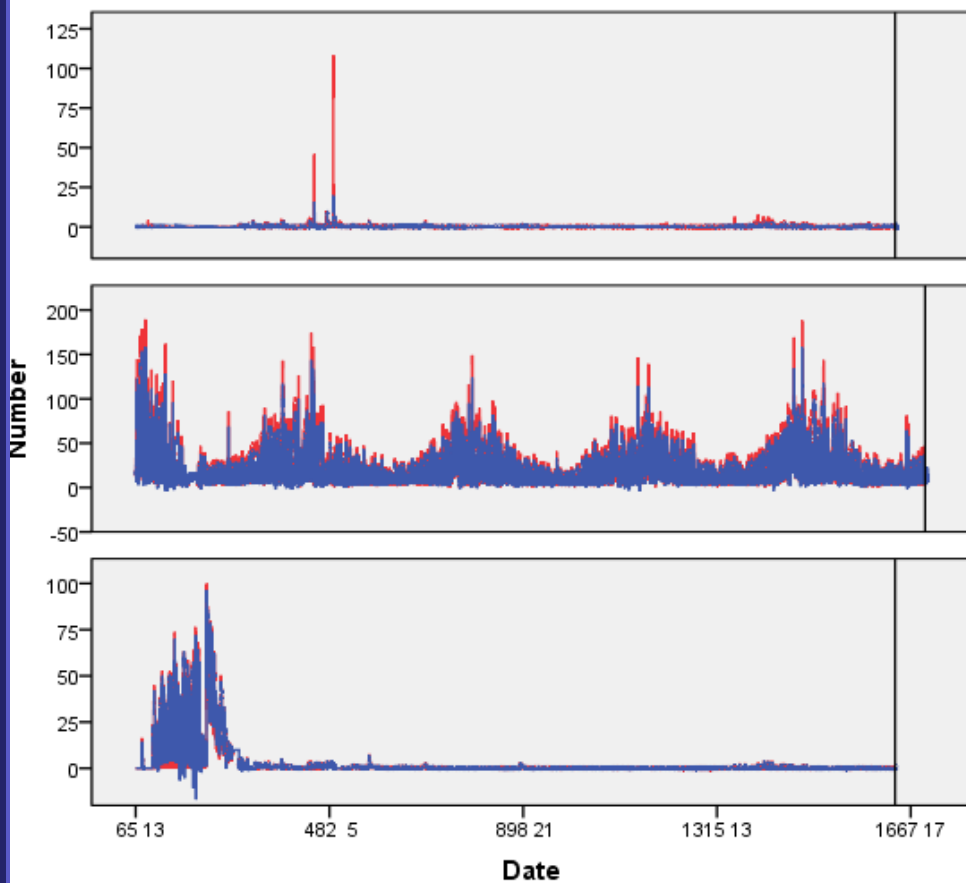
ARIMA модели за изследване замърсяването на въздуха - град Благоевград през периода 2008-2012

— Observed
— Fit
— Forecast



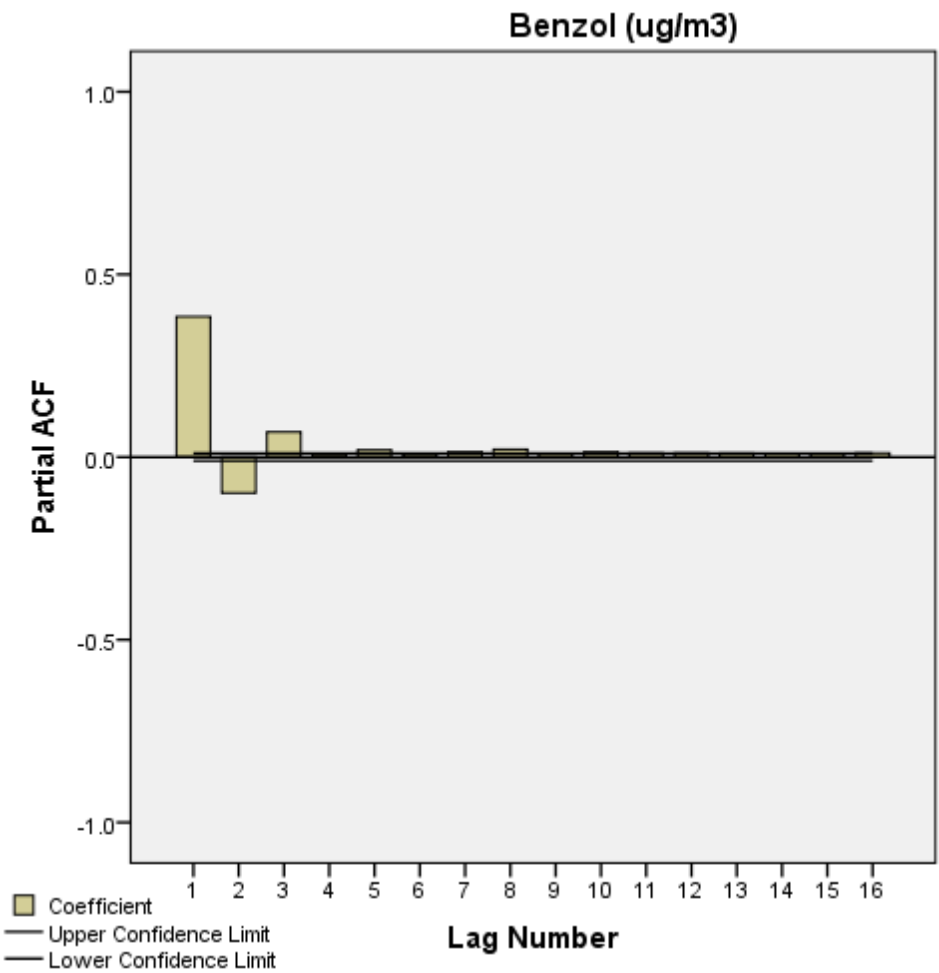
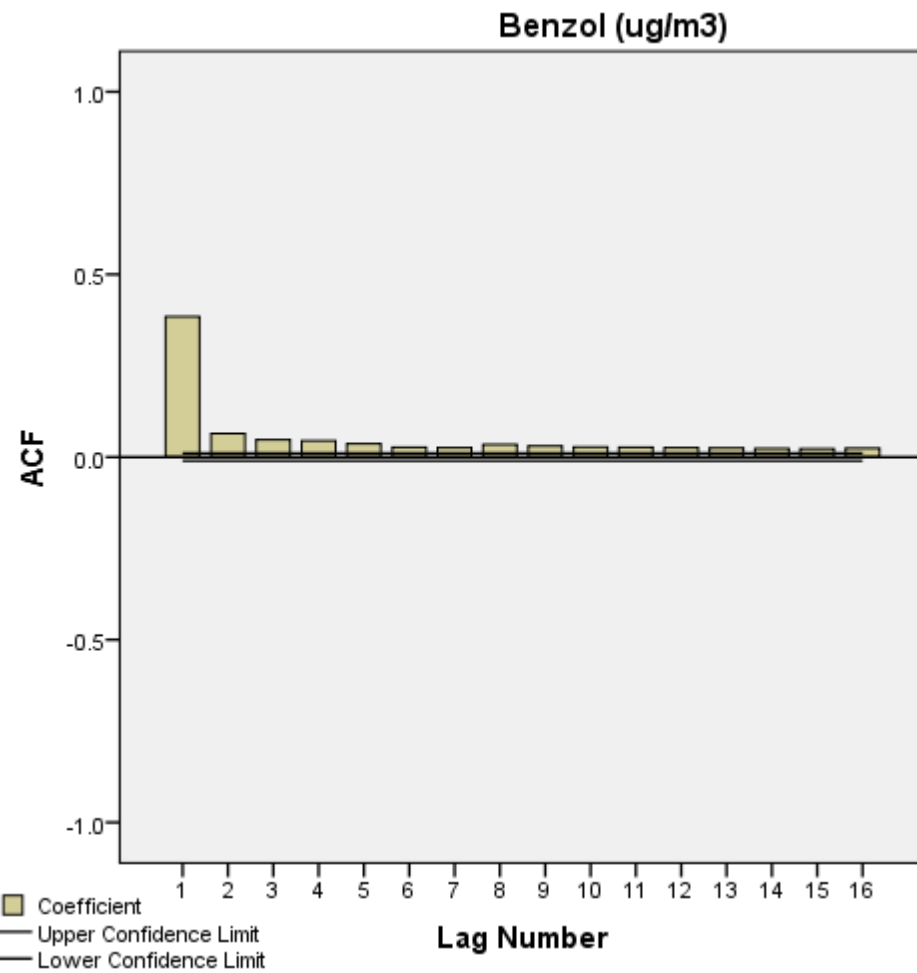
АРИМА модели за изследване замърсяването на въздуха - град Благоевград през периода 2008-2012

— Observed
— Fit
— Forecast

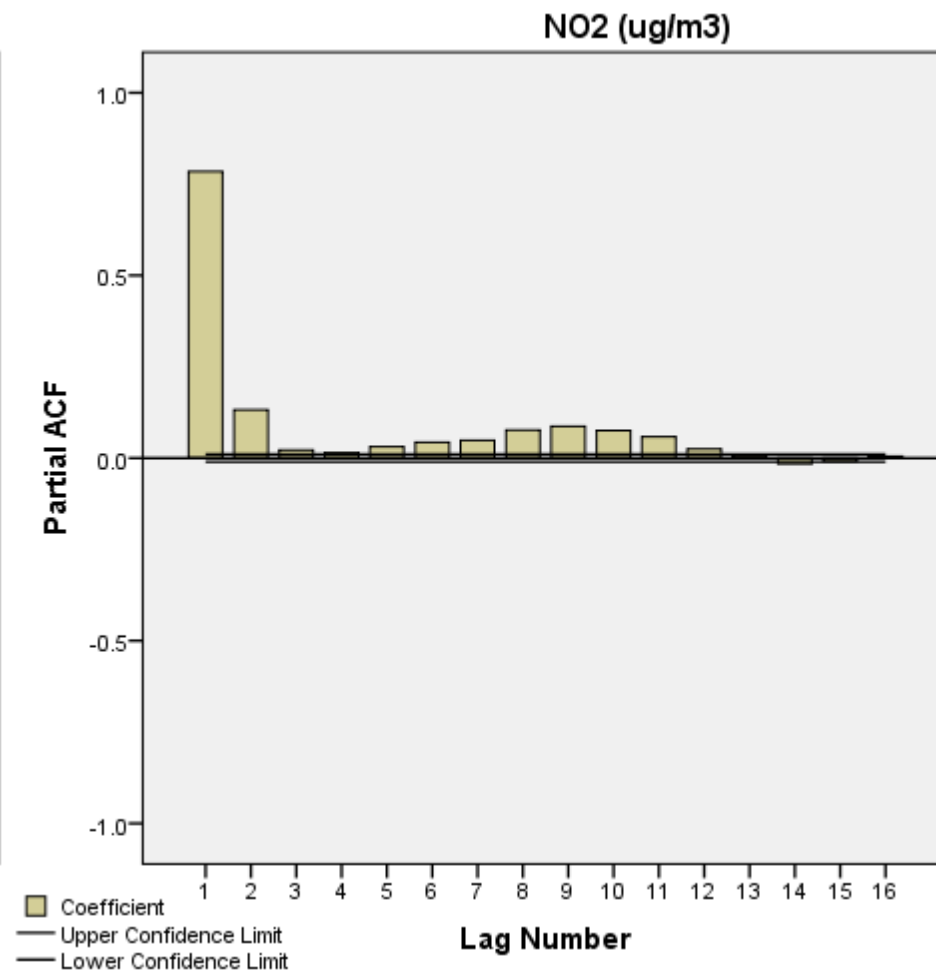
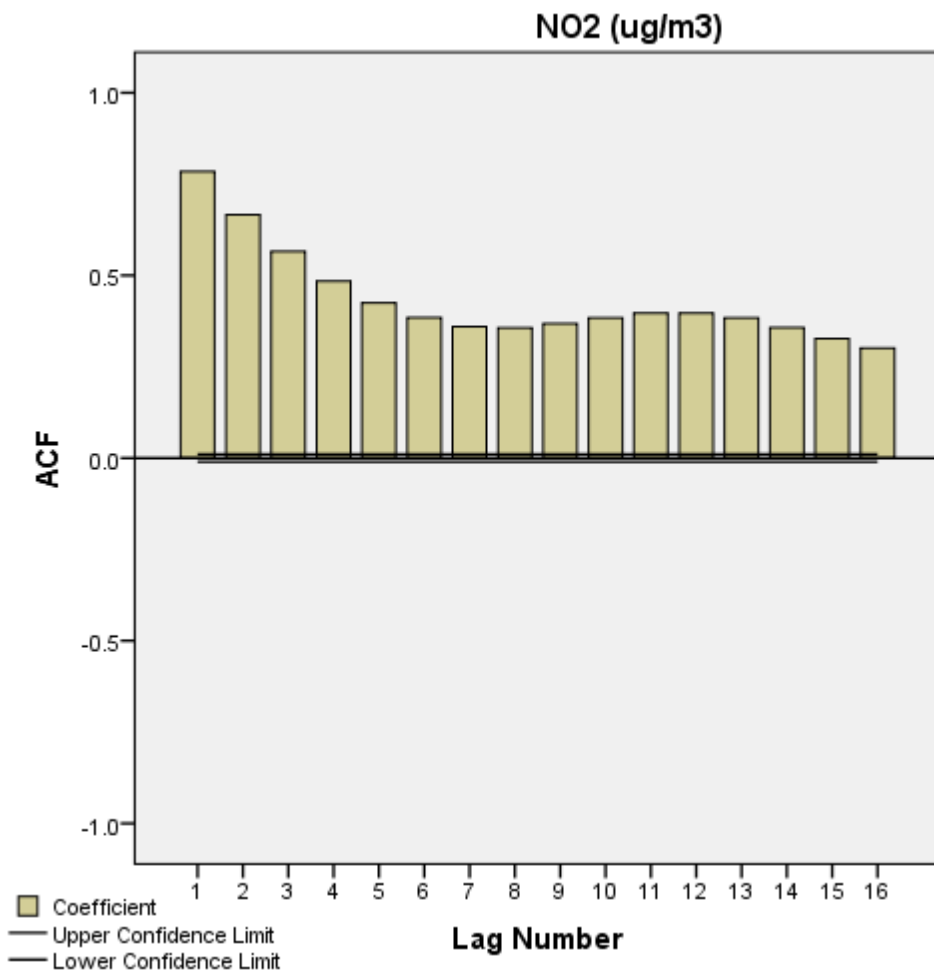


ARIMA модели за изследване замърсяването на въздуха - град Благоевград през периода 2008-2012

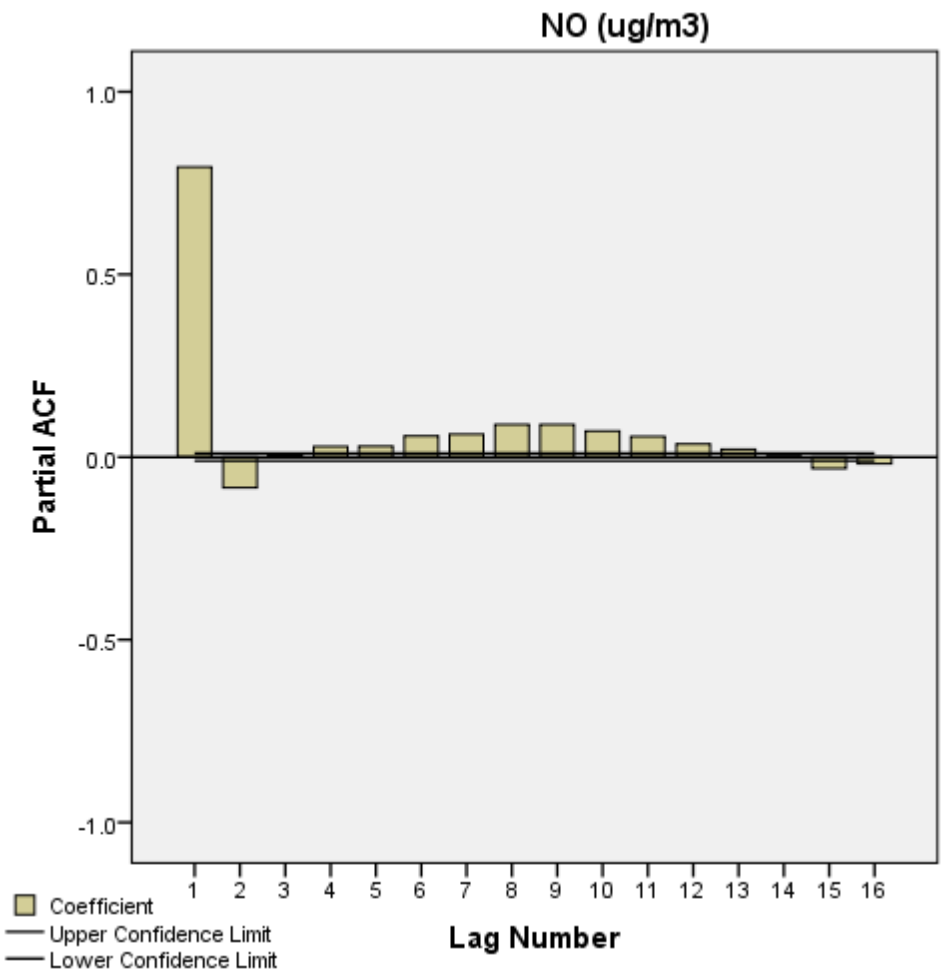
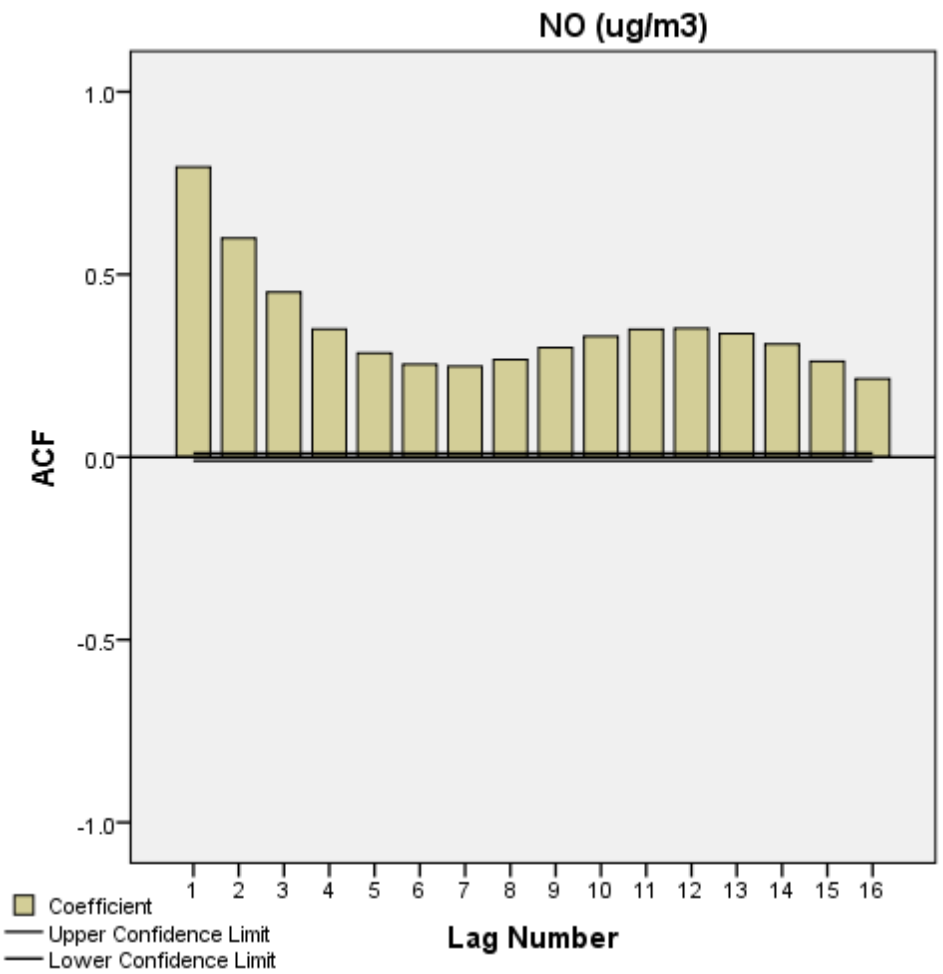
— Observed
— Fit
— Forecast



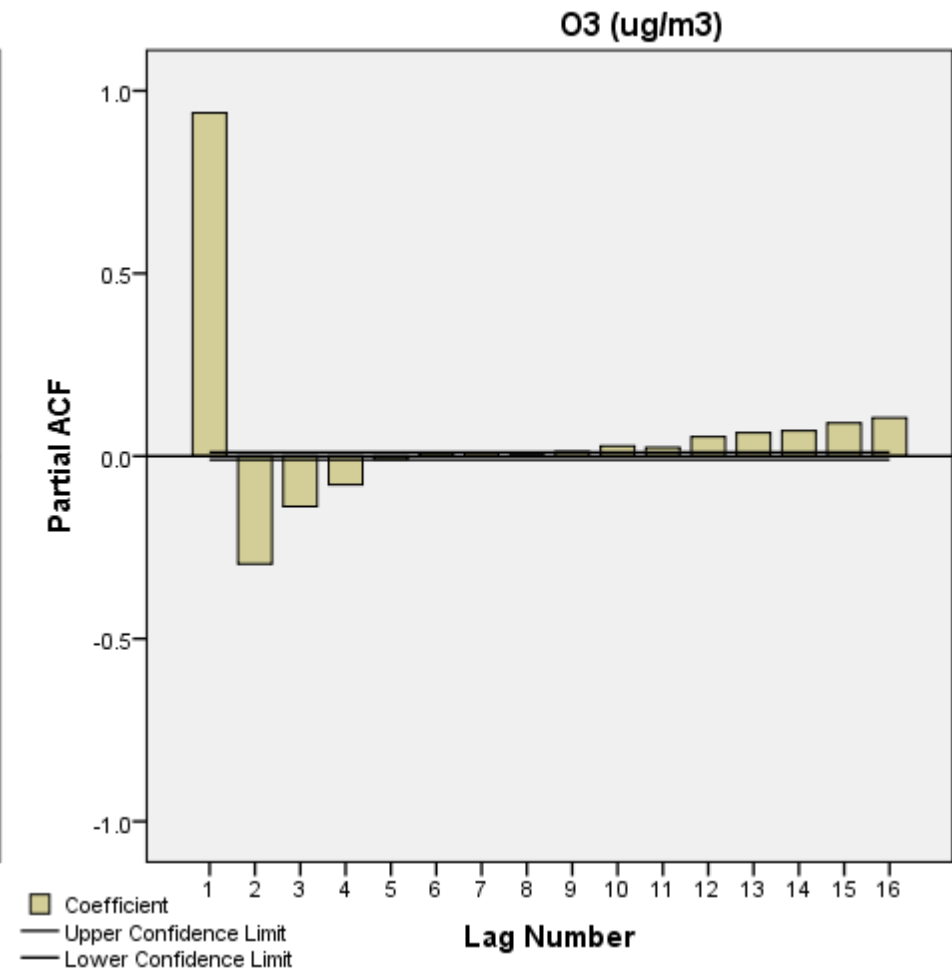
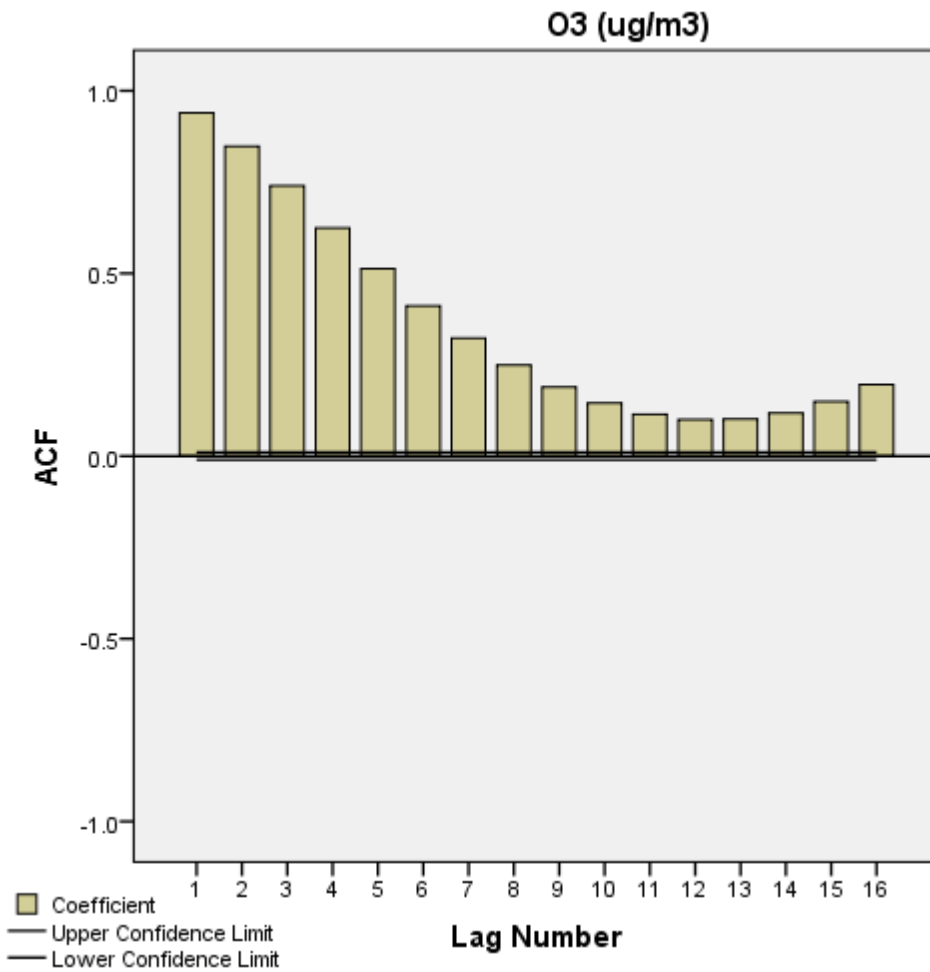
ARIMA модели за изследване замърсяването на въздуха - град Благоевград през периода 2008-2012



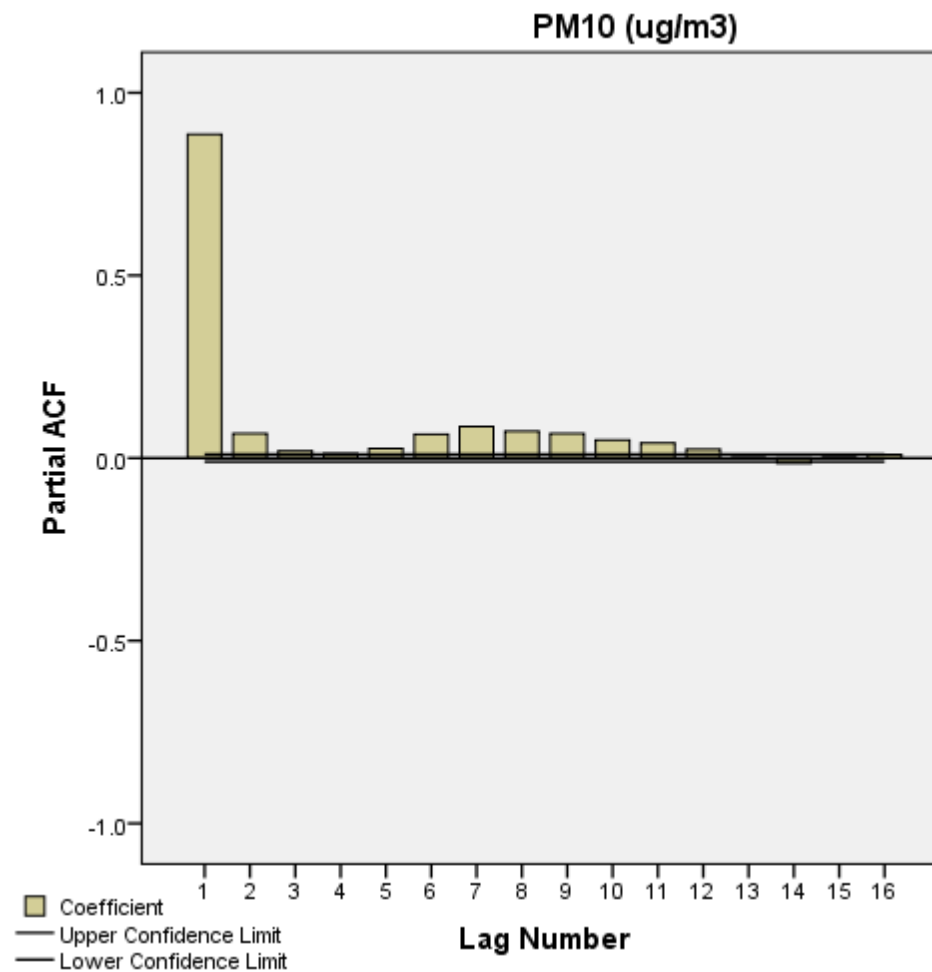
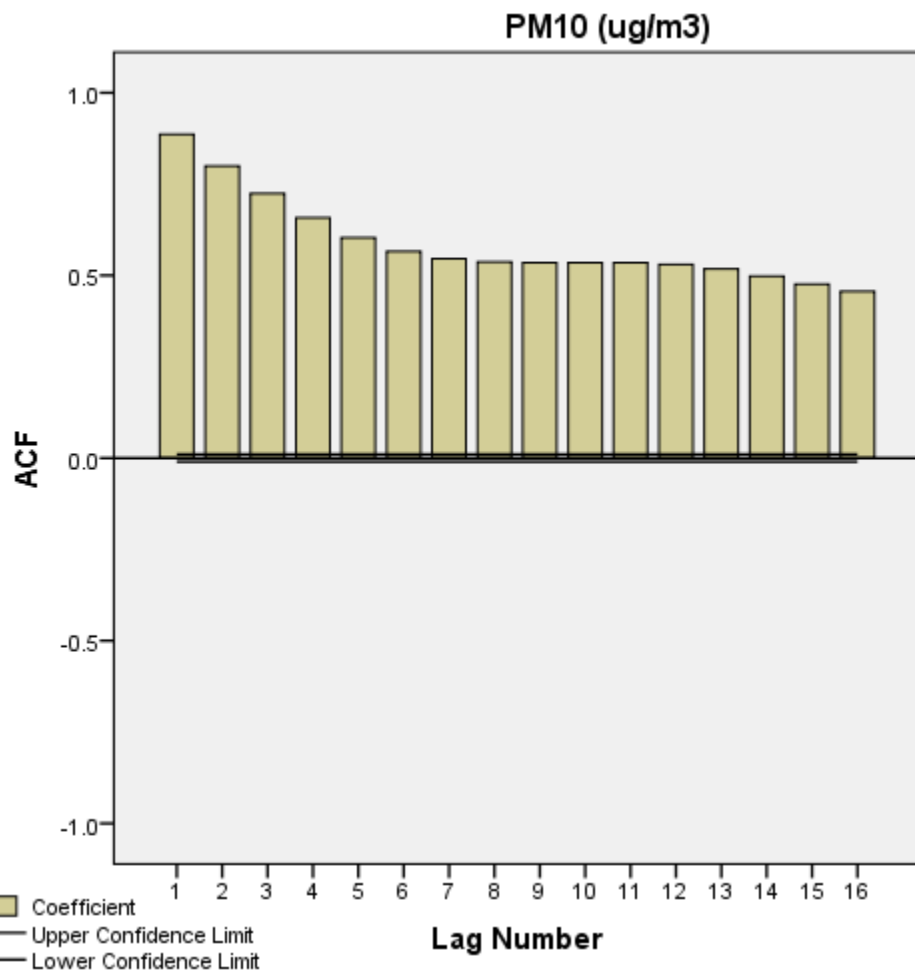
ARIMA модели за изследване замърсяването на въздуха - град Благоевград през периода 2008-2012



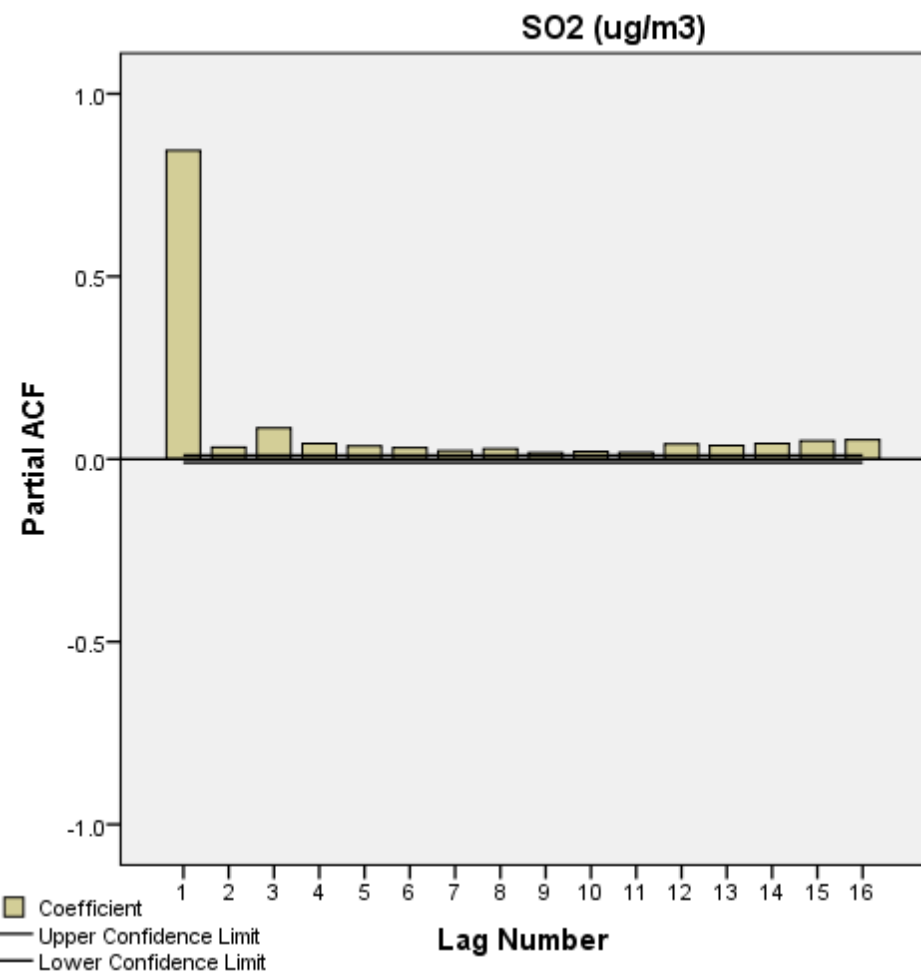
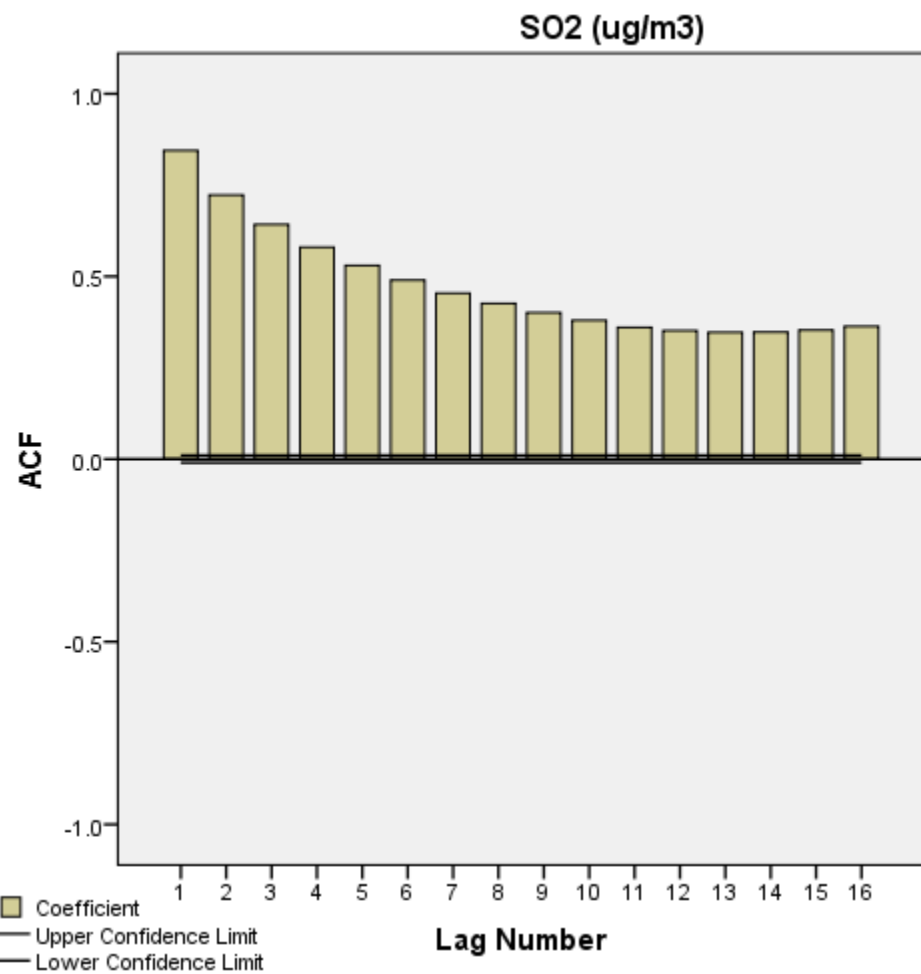
ARIMA модели за изследване замърсяването на въздуха - град Благоевград през периода 2008-2012



ARIMA модели за изследване замърсяването на въздуха - град Благоевград през периода 2008-2012

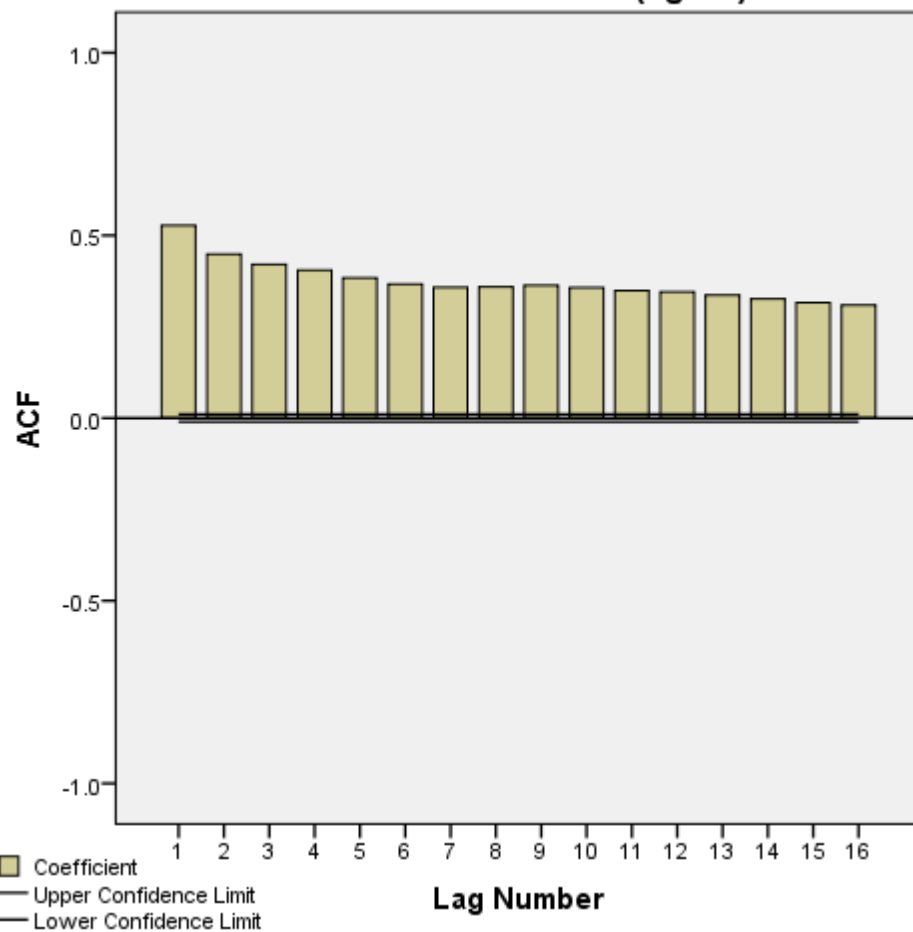


ARIMA модели за изследване замърсяването на въздуха - град Благоевград през периода 2008-2012

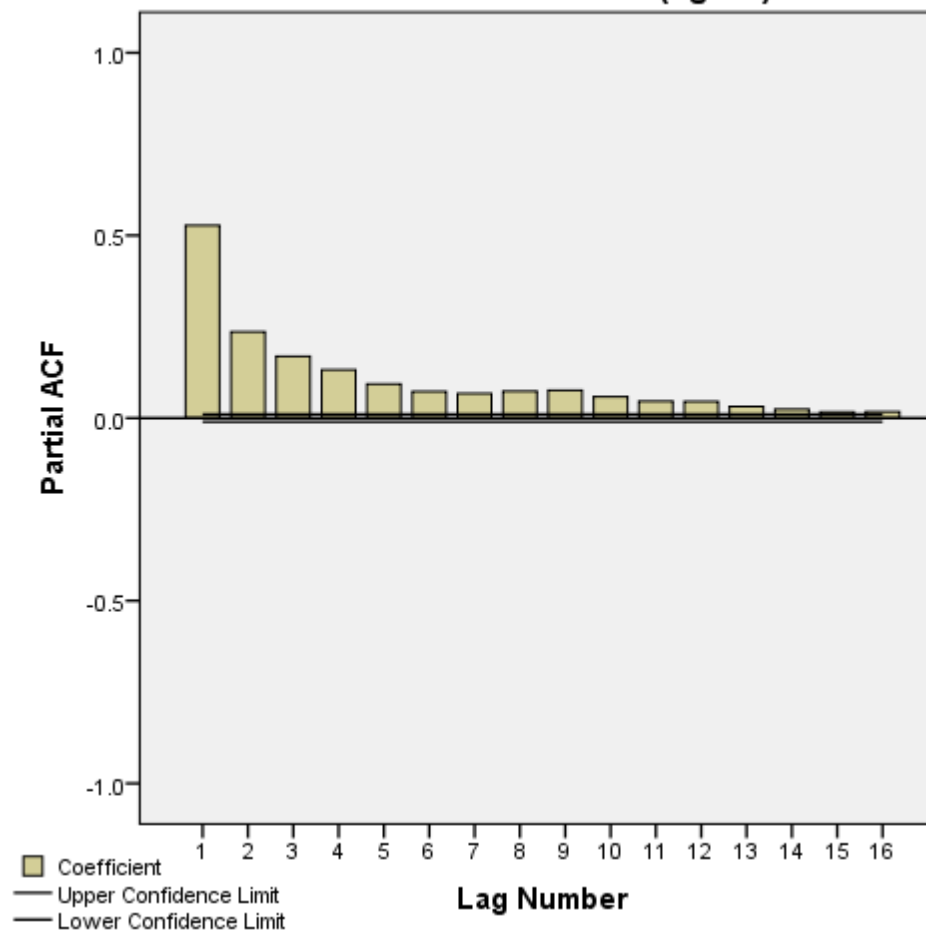


ARIMA модели за изследване замърсяването на въздуха - град Благоевград през периода 2008-2012

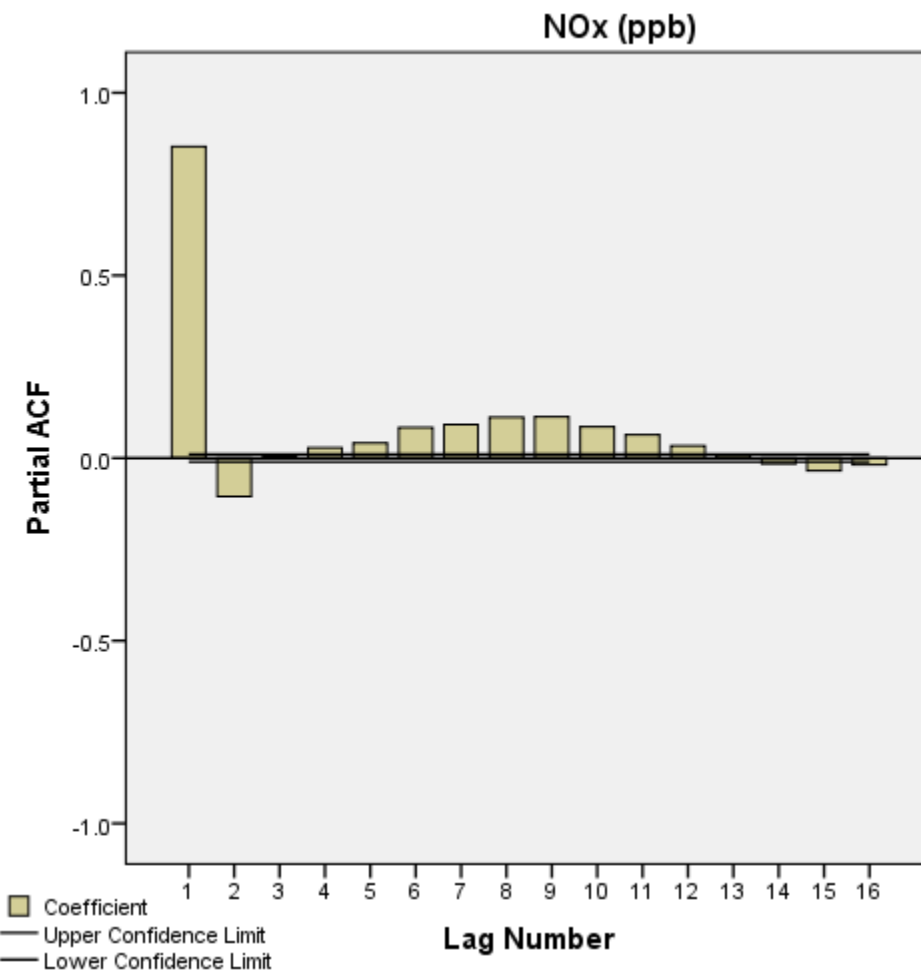
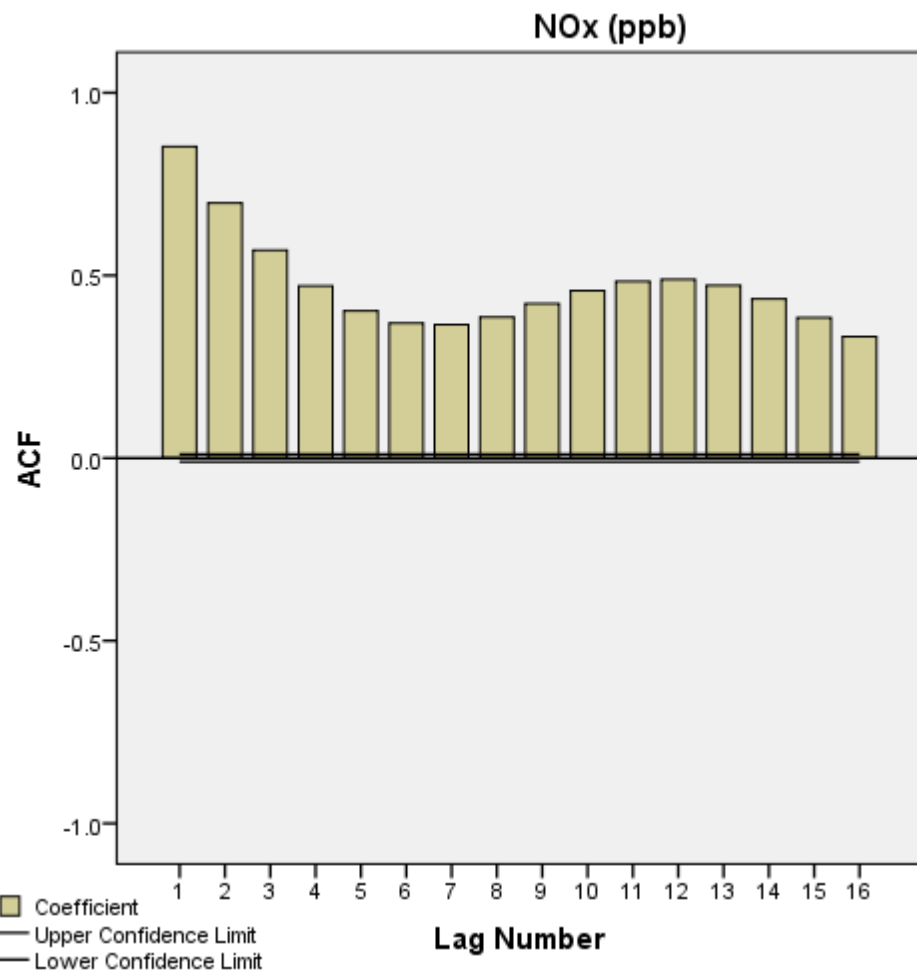
TOLUENE (ug/m3)



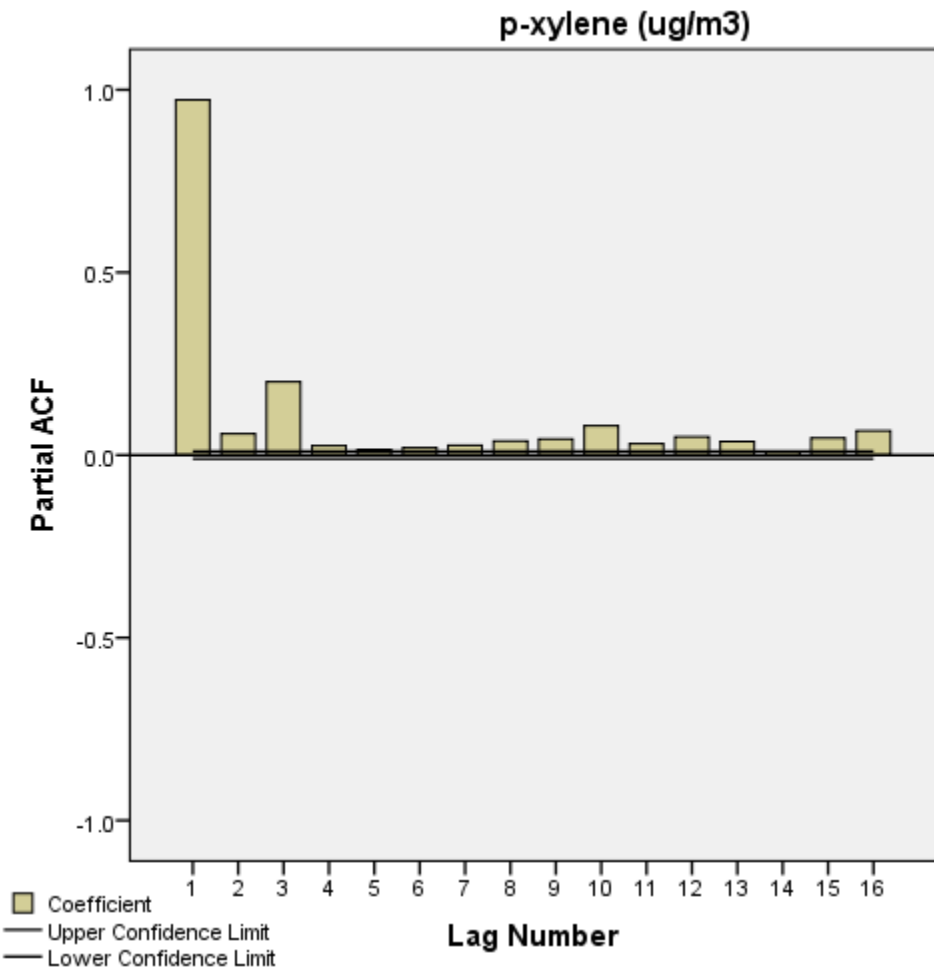
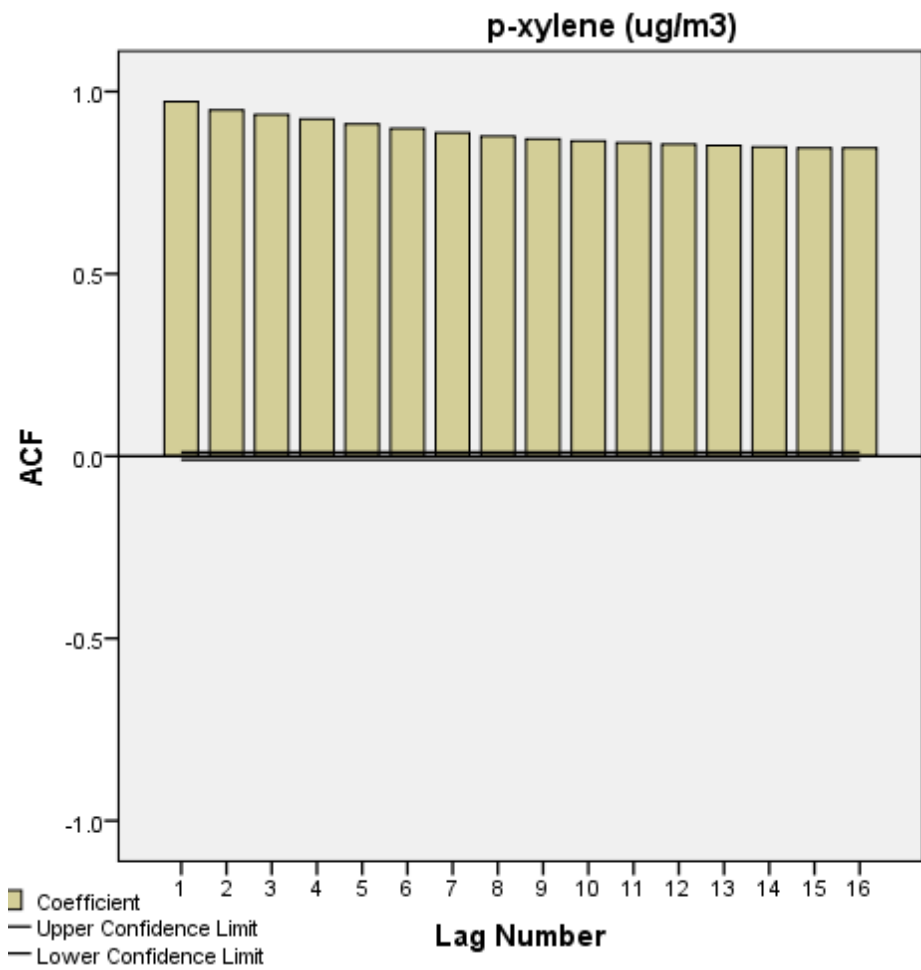
TOLUENE (ug/m3)



ARIMA модели за изследване замърсяването на въздуха - град Благоевград през периода 2008-2012



ARIMA модели за изследване замърсяването на въздуха - град Благоевград през периода 2008-2012



Благодаря за вниманието!